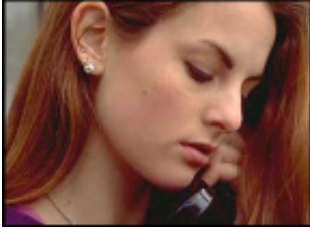


When You Don't Know Where To Turn...



We Can Help!

Our Mission

The purpose of the Perry Center is to minister the love of Jesus Christ to single women experiencing an unplanned pregnancy by providing for their physical, emotional, and spiritual needs in a residential setting.

Confidentiality

The confidentiality of each client is strictly maintained.

How to Apply

To apply to be a resident a pregnant woman must be single, between the ages of 12-23 years, and agree to follow the Perry Center program. Call the Perry Center at (701) 241-9289 for more information. The forms you need to fill out can be found on the website at www.perrycenter.org.



The Perry Center

2355 Meadow Ridge Parkway
West Fargo, North Dakota 58078

(701) 241-9289

www.perrycenter.org

Pregnant?

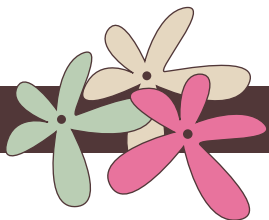
You're Not Alone!



The Perry Center 
...a loving home for expectant mothers

(701) 241-9289

www.perrycenter.org



Did You Know?

- * By Day 21 an unborn baby's heart begins to beat.
- * By 6 weeks brain waves can be detected.
- * 9-12 weeks his/her fingerprints are evident.
- * By the end of the 4th month his/her ears are functioning and he/she hears mom's heartbeat and external noises like music.
- * Babies born in the 5th month often survive.



A Brief History

The Perry Center was established to carry on the work of Dr. David and Judy Perry, who were killed in an auto accident in 1984. Dr. Perry was an OB/GYN whose heart was torn to see babies killed before birth by distraught mothers often responding to the pressure of others. He and Judy offered their home and their hearts to women with an unexpected pregnancy. In 1986 Darold and Patricia Larson founded a maternity home in their name to carry on this work of mercy.



The Facility

The Perry Center is housed in a beautiful new building that was built in 2005.

It is located on 45th Street, the border between Fargo and West Fargo. It is conveniently located only blocks away from several shopping centers including grocery stores, discount stores, restaurants, and hotels. The Fargo bus system runs within the area.

Each woman will share her room with another resident or at times have a room to herself. There is a large kitchen and dining area, a family room, a play area, a computer room, and a laundry area. The building is next door to the ministry office building.



The Program

The program that each young woman goes through during her stay at the Perry Center consists of many parts. Here are a few examples:

- 1. Counseling and Listening** - Our professional trained staff listens to each woman and gives her honest praise, guidance, and support.
- 2. Building Self-Respect and Confidence** - We want each young woman to know they are loved, valued, and appreciated.
- 3. Encouraging Education** - Each woman is encouraged to further her education, no matter what stage of education she is in. The staff assists her with an education plan, whether in a public school, alternative school, homebound tutoring, or independent studies.
- 4. Introducing God's Word** - We talk to the women about the basics of how to pray, who Jesus is, and about church attendance.
- 5. Teaching Trust** - Trust grows out of love. We teach trust through *Conflict Resolution*, *Anger Management*, and *Teen-Parent Communication* classes.
- 6. Providing Classes** - *Parenting* and *Pregnancy* classes

are taught by staff and other professionals. Other classes include *Labor & Delivery*, *Caring for Your Newborn*, *Nutrition*, *Decision-Making*, and *Adoption vs. Keeping*.

7. Preparing for the Workforce - Residents spend time at the Family Life Thrift Store learning job skills to assist them in acquiring future employment.

8. Responsibility and Accountability - In preparation for independent living, as well as for parenting or placing for adoption, staff fully explains responsibilities of parenthood.

9. Building Values - Each woman is taught honesty, dependability, cooperation, and basic Biblical principles about sexual morality and living a responsible moral life.

10. Making Decisions - One of the most difficult decisions a mother can make is whether to parent or release a baby for adoption. We encourage each woman to make a decision that will lead to a full, productive and loving life for both mother and baby.

11. Mentor Program - Our Mentor Program matches each woman with a woman who shares similar interests and can be a support and a friend. Many women and their Mentors keep in touch and continue the relationships years after.